



3" x 6" x 1"

General Specifications:

Input voltage 90 VAC to 264 VAC
Input frequency 47 Hz to 63 Hz
Standby power < 0.2W at no load
(remote off status) < 0.5W at 5Vsb/40mA output
Inrush current < 30/60A at 115/230VAC
Efficiency 90% typ.
Hold up time 18ms typ.
Over load/Short circuit protection auto recovery
Over voltage protection latch off
Operating temperature -30°C to 70°C
derating: 2.5% / °C > 50°C

Features:

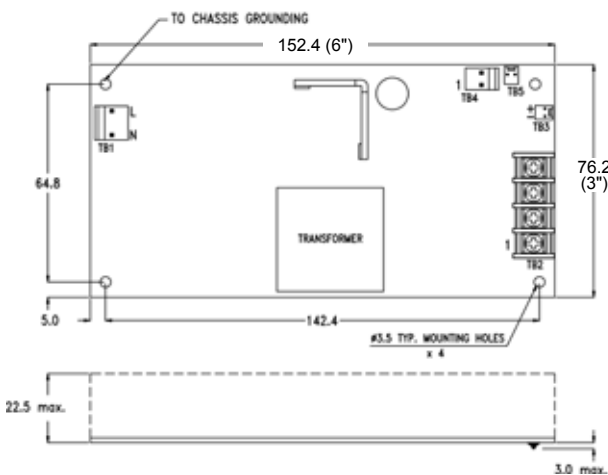
- Surge load (3 x rated current, Vo>60% typical for 1 sec)
- Peak load (1.5 ~ 2 x rated current, Vo=rated for 5 sec)
- Design for BF application
- Convection cooling for Rated power
- With +5Vsb & +12V Fan output
- Remote on/off & remote sense
- Fan speed controlled by loading
- EMI class B
- -30°C to +70°C operating temperature
- 5,000m operation altitude

Applications:

- For peak load and surge load applications, such as active speaker and audio power amplifier, motor drive, coffee machine, vending machine, gaming machine, and otehr industrials.
- For EMI class B application, such as home healthcare device, and other medical devices.

Cooling 200W at convection cooling
300W at forced air cooling
Storage temperature -40°C to +85°C
EMI EN55022 "B", EN61000-3-3
Harmonics..... EN61000-3-2, class D
EMS..... EN61000-4-2,-3,-4,-5,-6,-8,-11
Safety UL/CSA/EN60950-1, 2nd edition
ANSI/AMMI/CSA/EN60601-1, 3rd edition
Energy Saving ENERGY STAR
for computers version 6.0
for displays version 6.0
ErP regulation EC(No) 1275/2008

Mechanical Specifications:



-Hui-

Notes:

1. Size:
3" x 6" x 1"
2. Mounting Hole:
TBD
3. Connectors:
AC input : Molex 5277-02A or equivalent
DC output : Terminal Blocks (default for SNP-P207) or
Molex 5273-08 (default for others) or equivalent
Remote ON/OFF & Standby Output & Fan output &
Remote Sense: Molex 5272-03 or equivalent
4. Output Pin assignment: Function Pin assignment:

Pin No.	1	2	3	4	5	6	7	8
SNP-P207-S	+Vo	+Vo	GND	GND				
OTHER MODELS	+Vo	+Vo	+Vo	+Vo	GND	GND	GND	GND

Function	TB3	TB4	TB5	TB6	TB7
Pin	FAN Output	Standby Output	Remote Sense	Remote Control	PG/PF
1	GND	GND	Sense-	GND	GND
2	+12V	+5Vsb	Sense+	+	+
5. Packing:
Net weight: TBD g approx. / unit
Gross weight: TBD kg approx. / carton, TBD units / carton
Carton size (mm): TBD (L) x TBD (W) x TBD (H)

10 years Warranty (contact Skynet's Distributors for details)

Output Specifications:

MODEL NO.	OUTPUT RAIL	LOAD				INITIAL ACCURACY	STEP EFFICIENCY			AVERAGE EFFICIENCY
		MIN.	RATED	MAX.	PEAK		@ 20% LOAD	@ 50% LOAD	@ 100% LOAD	
SNP-P207-S	+12V	0A	16.66A	25A	33.3A	+11.9V~+12.1V +4.5V~+5.5V	85%	90%	90%	88%
	+5Vsb	0A	1A							
SNP-P209-S	+24V	0A	8.33A	12.25A	16.66A	+23.9V~+24.1V +4.5V~+5.5V	85%	90%	90%	88%
	+5Vsb	0A	1A							

Note:

- Standby Power Consumption with System:**
For computers and displays, ENERGY STAR in U.S. and ErP regulation in Europe require the input power should be less than 0.5W at standby mode.
- Output Load:**
200W for convection cooling; 300W for forced air cooling.
- Peak Load Duration:**
Peak 400W can last for 5 sec.
- Isolation Grade:**
Primary ↔ Ground : 1MOPP (1500Vac)
Primary ↔ Secondary : 2MOPP (4000Vac)
Secondary ↔ Ground : 1MOPP (1500Vac)
- Leakage Current:**
Earth leakage current < 300uA
Touch current < 100uA
- EMI Grounding:**
If there is a metal sheet under the power supply, connect the EMI ground to that metal sheet.
- Model Selection:**
SNP-P20x-S is for ITE & medical applications.